

PEMEX

Internacional

Países exportadores de petróleo crudo, 2002

(miles de barriles diarios)

Arabia Saudita	5 285
Países de la ex Unión Soviética	3 940
Noruega	3 113
Irán	2 094
Nigeria	1 798
Reino Unido	1 746
México	1 715
Emiratos Arabes Unidos	1 614
Venezuela	1 572
Irak	1 495

Fuente: OPEP (Annual Statistical Bulletin 2002) y Pemex

COMERCIO EXTERIOR DE HIDROCARBUROS Y SUS DERIVADOS

	1993	1994	1995	1996	1997	1998	1999	2000	2001	2002	2003	Variación 2003/2002 (%)
millones de dólares												
Exportaciones netas	6 013.0	6 051.1	7 194.4	9 966.4	8 543.6	4 910.3	7 244.4	11 628.5	8 499.0	11 511.3	14 601.3	26.8
Exportaciones	7 458.6	7 517.1	8 400.7	11 608.4	11 209.6	7 142.2	9 914.2	16 300.3	12 607.5	14 827.8	18 595.1	25.4
Petróleo crudo	6 441.0	6 624.1	7 479.6	10 704.0	10 340.1	6 465.6	8 858.8	14 886.9	11 590.6	13 528.8	16 835.1	24.4
Olmeca	1 351.6	1 948.5	2 739.2	3 868.5	3 456.9	2 250.9	2 846.2	4 280.2	2 693.9	2 239.4	2 342.0	4.6
Istmo	1 513.6	1 004.0	959.1	1 385.8	1 432.1	897.6	1 209.7	1 160.1	665.3	413.7	249.4	-39.7
Maya ^a	3 575.8	3 671.5	3 781.3	5 449.7	5 451.0	3 317.1	4 803.0	9 446.5	8 231.4	10 875.7	14 243.7	31.0
Gas seco	3.4	14.8	12.4	31.8	37.0 ^f	30.9 ^f	114.3 ^f	48.8	47.8	4.0	-	-
Productos petrolíferos ^b	827.9	601.7	661.2	671.6	645.3	526.9	832.7	1 118.9	856.3	1 182.0	1 614.5	36.6
Productos petroquímicos	186.3	276.5	247.4	201.0	187.1	118.8	108.4	245.7	112.9	112.9	145.5	28.9
Importaciones	1 445.6	1 466.0	1 206.2	1 642.0	2 666.0	2 231.9	2 669.7	4 671.8	4 108.5	3 316.5	3 993.8	20.4
Gas seco	77.5	82.2	99.1	67.1	107.9 ^f	121.7 ^f	132.2 ^f	366.5	423.8	775.4	1 526.2	96.8
Productos petrolíferos	1 341.2	1 326.7	1 074.9	1 550.0	2 506.3	2 089.5	2 511.5	4 233.4	3 656.2	2 495.2	2 423.3	-2.9
Productos petroquímicos	26.9	57.1	32.2	24.9	51.8	20.7	25.9	72.0	28.6	45.9	44.3	-3.6
miles de barriles diarios												
Exportaciones												
Petróleo crudo	1 337.1	1 307.4	1 305.5	1 543.8	1 720.7	1 741.2	1 553.5	1 652.1	1 709.9	1 715.4	1 860.3	8.4
Olmeca	218.4	328.0	428.7	491.5	485.2	470.3	435.2	404.1	308.4	246.3	218.6	-11.2
Istmo	262.3	179.4	157.8	189.1	215.8	208.1	189.7	114.6	82.0	47.7	24.4	-48.9
Maya ^a	856.5	800.0	719.0	863.2	1 019.7	1 062.9	928.6	1 133.4	1 319.5	1 421.4	1 617.3	13.8
Gas seco ^c	0.7	2.8	3.2	5.3	6.3 ^f	5.9 ^f	20.4 ^f	3.5	3.7	0.6	-	-
Productos petrolíferos ^b	155.9	109.7	118.7	90.8	93.0	120.7	149.5	111.5	103.7	155.9	177.2	13.7
Productos petroquímicos ^d	1 324.1	1 559.4	1 226.1	1 123.4	1 062.3	1 009.9	809.2	1 116.2	780.4	831.8	808.8	-2.8
Importaciones												
Gas seco ^c	14.2	18.4	25.5	12.3	16.9 ^f	22.6 ^f	22.0 ^f	34.1	43.1	87.3	111.6	27.8
Productos petrolíferos ^e	176.6	188.7	139.5	177.3	298.6	334.3	325.3	363.2	335.3	243.6	199.9	-18.0
Productos petroquímicos ^d	86.8	178.1	97.4	90.4	164.7	71.7	106.2	317.3	128.1	197.4	94.7	-52.0

a. Incluye crudo pesado Altamira.

b. En 2003 se incluye 2.2 millones de dólares y 0.2 Mbd de exportación de condensados.

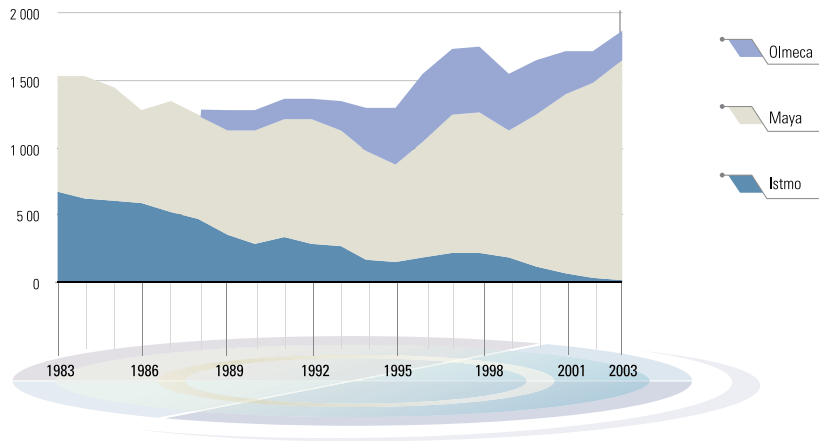
c. Equivalente a combustóleo.

d. Miles de toneladas.

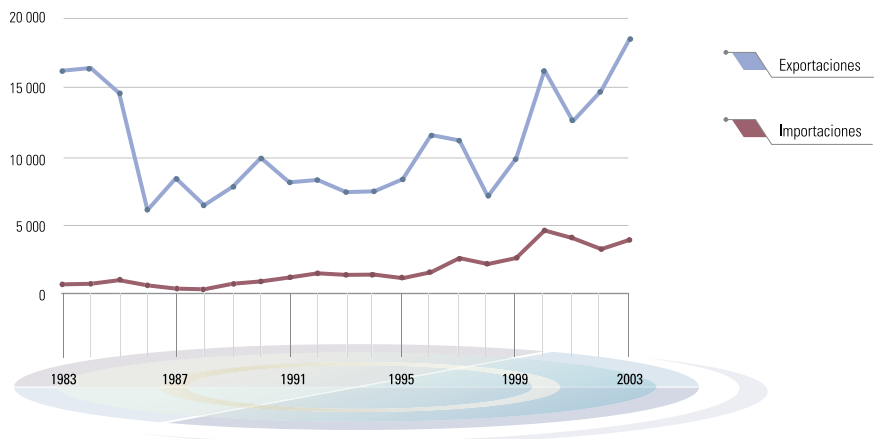
e. No incluye el retorno de productos por concepto de maquila de crudo.

f. Incluye la compra y reventa de gas natural en Estados Unidos.

VOLUMEN DE LAS EXPORTACIONES DE PETRÓLEO CRUDO
miles de barriles diarios



BALANZA DE COMERCIO EXTERIOR DE HIDROCARBUROS
millones de dólares



VALOR DE LAS EXPORTACIONES DE PETRÓLEO CRUDO POR DESTINO GEOGRÁFICO

millones de dólares

	1993	1994	1995	1996	1997	1998	1999	2000	2001	2002	2003	Variación 2003/2002 (%)
Total	6 441.0	6 624.1	7 479.6	10 704.0	10 340.1	6 465.6	8 858.8	14 886.9	11 590.6	13 528.8	16 835.1	24.4
América	4 857.2	5 230.2	6 304.7	9 355.5	8 957.5	5 667.3	7 644.2	12 974.3	10 063.5	11 718.5	14 825.0	26.5
Estados Unidos	4 361.8	4 853.4	5 963.4	8 487.2	8 140.9	5 111.9	6 801.8	11 368.2	8 709.2	10 645.4	13 281.6	24.8
Otros	495.5	376.8	341.3	868.3	816.6	555.4	842.4	1 606.1	1 354.3	1 073.1	1 543.4	43.8
Europa	1 150.3	937.7	710.3	747.0	886.7	612.5	944.1	1 554.0	1 217.8	1 444.9	1 450.2	0.4
Lejano Oriente	433.5	456.2	464.7	601.5	420.2	131.2	252.8	358.6	266.9	365.5	547.9	49.9
Africa	-	-	-	-	75.7	54.6	17.7	-	42.5	-	12.0	-
Olmeca	1 351.6	1 948.5	2 739.2	3 868.5	3 456.9	2 250.9	2 846.2	4 280.2	2 693.9	2 239.3	2 342.0	4.6
América	1 351.6	1 948.5	2 739.2	3 868.5	3 441.7	2 247.0	2 846.2	4 280.2	2 693.9	2 239.4	2 342.0	4.6
Estados Unidos	1 318.4	1 813.4	2 594.5	3 662.9	3 265.3	2 216.6	2 817.3	4 029.6	2 459.4	2 056.9	2 044.3	-0.6
Otros	33.2	135.2	144.7	205.6	176.3	30.4	28.9	250.6	234.4	182.4	297.7	63.2
Africa	-	-	-	-	15.3	4.0	-	-	-	-	-	-
Istmo	1 513.6	1 004.0	959.1	1 385.8	1 432.1	897.6	1 209.7	1 160.2	665.3	413.7	249.4	-39.7
América	911.4	496.5	486.1	777.5	872.1	573.6	875.0	898.5	507.9	292.9	159.8	-45.5
Estados Unidos	595.3	335.0	401.0	508.7	573.6	377.2	651.5	628.2	326.5	184.3	98.3	-46.7
Otros	316.1	161.5	85.1	268.8	298.6	196.4	223.5	270.3	181.4	108.6	61.4	-43.4
Europa	238.7	100.7	67.5	66.0	128.8	170.4	166.9	111.1	85.0	69.5	23.3	-66.5
Lejano Oriente	363.4	406.9	405.6	542.3	390.1	105.6	150.1	150.5	72.4	51.3	66.4	29.4
Africa	-	-	-	-	41.1	47.9	17.7	-	-	-	-	-
Maya	3 575.8	3 671.5	3 781.3	5 449.7	5 451.0	3 317.1	4 803.0	9 446.5	8 231.4	10 875.7	14 243.7	31.0
América	2 594.2	2 785.2	3 079.4	4 709.4	4 643.8	2 846.7	3 923.0	7 795.5	6 861.7	9 186.2	12 323.2	34.2
Estados Unidos ^a	2 448.0	2 705.0	2 967.9	4 315.5	4 302.1	2 518.1	3 333.0	6 710.4	5 923.3	8 404.1	11 138.9	32.5
Otros	146.1	80.1	111.5	393.9	341.7	328.5	590.0	1 085.1	938.4	782.1	1 184.3	51.4
Europa	911.6	837.1	642.7	681.0	758.0	442.1	777.3	1 442.9	1 132.8	1 375.4	1 427.0	3.7
Lejano Oriente	70.1	49.3	59.1	59.2	30.1	25.6	102.7	208.1	194.4	314.2	481.5	53.3
Africa	-	-	-	-	19.3	2.7	-	-	42.5	-	12.0	-

a. Incluye crudo pesado Altamira.

VOLUMEN DE LAS EXPORTACIONES DE PETRÓLEO CRUDO POR DESTINO GEOGRÁFICO

miles de barriles diarios

	1993	1994	1995	1996	1997	1998	1999	2000	2001	2002	2003	Variación 2003/2002 (%)
Total	1 337.1	1 307.4	1 305.5	1 543.8	1 720.7	1 741.2	1 553.5	1 652.1	1 709.9	1 715.4	1 860.3	8.4
América	970.5	1 030.4	1 094.2	1 335.2	1 469.5	1 506.6	1 329.9	1 424.5	1 484.8	1 482.6	1 625.3	9.6
Estados Unidos	879.3	960.8	1 037.1	1 209.6	1 334.9	1 341.5	1 171.2	1 241.6	1 285.1	1 342.0	1 456.1	8.5
Otros	91.2	69.6	57.1	125.6	134.6	165.2	158.7	182.9	199.8	140.7	169.2	20.3
Europa	286.2	195.8	134.0	121.7	175.9	190.3	176.5	188.1	181.2	186.1	170.6	-8.3
Lejano Oriente	80.4	81.2	77.2	86.9	62.6	31.5	42.1	39.5	37.5	46.7	63.2	35.5
África	-	-	-	-	12.7	12.8	4.9	-	6.4	-	1.2	-
Olmeca	218.4	328.0	428.7	491.5	485.2	470.3	435.2	404.1	308.4	246.3	218.6	-11.2
América	218.4	328.0	428.7	491.5	483.0	469.5	435.2	404.1	308.4	246.3	218.6	-11.2
Estados Unidos	213.4	305.6	406.3	464.7	457.5	463.5	431.0	380.7	281.7	226.1	191.1	-15.5
Otros	5.1	22.4	22.4	26.8	25.5	5.9	4.2	23.4	26.7	20.2	27.5	36.3
África	-	-	-	-	2.2	0.8	-	-	-	-	-	-
Istmo	262.3	179.4	157.8	189.1	215.8	208.1	189.7	114.6	82.0	47.7	24.4	-48.9
América	156.8	90.9	80.6	103.0	131.0	128.8	134.4	88.2	63.0	33.8	15.4	-54.3
Estados Unidos	102.7	61.4	66.7	67.3	87.7	83.7	97.7	62.1	41.1	21.5	9.4	-56.1
Otros	54.1	29.4	13.9	35.7	43.3	45.1	36.7	26.1	21.9	12.3	6.0	-51.0
Europa	42.4	18.0	11.4	9.2	21.4	44.8	29.0	10.9	10.2	8.0	2.4	-70.6
Lejano Oriente	63.0	70.5	65.8	76.9	57.0	23.5	21.4	15.4	8.7	5.9	6.6	10.8
África	-	-	-	-	6.4	11.0	4.9	-	-	-	-	-
Maya	856.5	800.0	719.0	863.2	1 019.7	1 062.9	928.6	1 133.4	1 319.5	1 421.4	1 617.3	13.8
América	595.3	611.5	585.0	740.7	855.5	908.4	760.3	932.1	1 113.4	1 202.6	1 391.2	15.7
Estados Unidos ^a	563.3	593.8	564.1	677.7	789.7	794.2	642.5	798.8	962.2	1 094.4	1 255.6	14.7
Otros	32.0	17.8	20.9	63.0	65.8	114.2	117.9	133.4	151.1	108.2	135.7	25.4
Europa	243.8	177.8	122.6	112.5	154.5	145.5	147.5	177.2	170.9	178.1	168.2	-5.5
Lejano Oriente	17.4	10.7	11.4	10.0	5.6	8.0	20.7	24.1	28.7	40.7	56.6	39.1
África	-	-	-	-	4.1	0.9	-	-	6.4	-	1.2	-

a. Incluye crudo pesado Altamira.

EXPORTACIONES DE PETRÓLEO CRUDO POR PAÍS DE DESTINO

miles de barriles diarios

	1993	1994	1995	1996	1997	1998	1999	2000	2001	2002	2003	Variación 2003/2002 (%)
Total	1 337.1	1 307.4	1 305.5	1 543.8	1 720.7	1 741.2	1 553.5	1 652.1	1 709.9	1 715.4	1 860.3	8.4
Estados Unidos	879.3	960.8	1 037.1	1 209.6	1 334.9	1 341.5	1 171.2	1 241.6	1 285.1	1 342.0	1 456.1	8.5
España	199.2	154.4	99.8	95.2	122.8	134.8	121.9	142.8	144.4	146.0	138.2	-5.3
Antillas Holandesas	-	0.8	9.4	67.0	58.2	86.5	103.0	109.7	132.5	90.6	108.9	20.2
India	-	-	-	-	-	-	-	4.9	20.8	36.7	52.5	43.0
Convenio de San José	45.3	29.9	24.6	30.7	42.3	45.4	32.8	44.7	41.5	28.3	32.9	16.5
Canadá	25.6	18.9	11.5	20.5	30.4	32.6	22.9	28.5	25.8	21.8	27.3	25.3
Portugal	15.1	10.0	10.1	7.5	15.5	20.7	20.4	17.5	15.2	15.4	15.0	-2.0
Gran Bretaña	7.8	8.6	6.1	3.1	9.2	11.4	16.7	17.8	14.6	15.7	12.5	-20.2
Japón	80.4	81.2	77.2	86.9	62.6	31.5	42.1	34.6	16.7	9.9	10.7	7.8
Israel	18.3	-	-	-	5.1	3.5	4.6	4.8	3.6	4.8	4.8	-0.7
Holanda	-	-	2.7	-	17.9	18.3	11.4	1.4	-	2.7	-	-
Sudáfrica	-	-	-	-	12.7	12.8	4.9	-	1.8	-	-	-
Otros	66.2	42.8	26.9	23.3	9.2	2.3	1.5	3.9	8.2	1.5	1.2	-21.6

DESTINO DE LAS EXPORTACIONES DE PETRÓLEO CRUDO, 2003

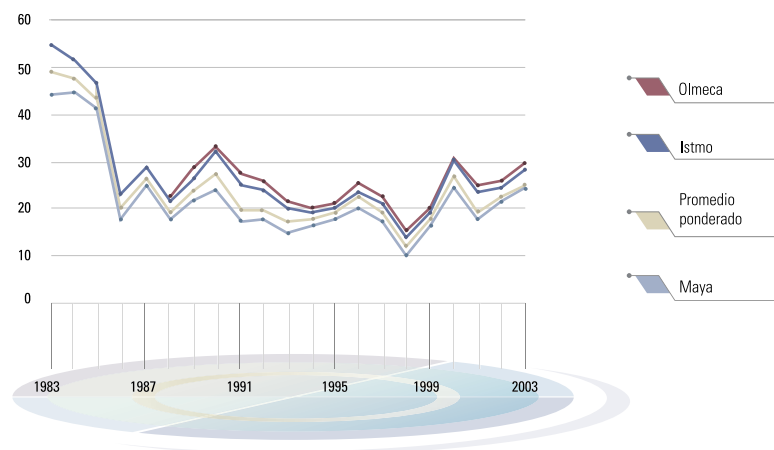


PRECIO PROMEDIO DEL PETRÓLEO CRUDO EXPORTADO

	1993	1994	1995	1996	1997	1998	1999	2000	2001	2002	2003	Variación 2003/2002 (%)
dólares por barril												
Precio promedio	13.20	13.88	15.70	18.94	16.46	10.17	15.62	24.62	18.57	21.61	24.79	14.7
Olmecca	16.95	16.27	17.51	21.50	19.52	13.11	17.92	28.94	23.93	24.91	29.35	17.8
Istmo	15.81	15.33	16.66	20.02	18.19	11.82	17.47	27.67	22.23	23.76	28.05	18.1
Maya	11.44	12.57	14.41	17.25	14.65	8.56	14.18	22.81	17.15	20.98	24.14	15.1

	1993	1994	1995	1996	1997	1998	1999	2000	2001	2002	2003	Variación 2003/2002 (%)
dólares de 2003 por barril												
Precio promedio	16.81	17.23	18.96	22.21	18.87	11.48	17.25	26.31	19.29	22.10	24.79	12.16
Olmecca	21.58	20.20	21.14	25.21	22.38	14.80	19.79	30.92	24.86	25.48	29.35	15.20
Istmo	20.13	19.03	20.11	23.48	20.85	13.34	19.29	29.57	23.10	24.30	28.05	15.42
Maya	14.57	15.61	17.40	20.23	16.80	9.66	15.66	24.37	17.82	21.46	24.14	12.50

PRECIO PROMEDIO DEL PETRÓLEO CRUDO EXPORTADO
Dólares de 2003 por barril



PRECIO PROMEDIO DEL PETRÓLEO CRUDO EXPORTADO POR DESTINO GEOGRÁFICO

dólares por barril

	1993	1994	1995	1996	1997	1998	1999	2000	2001	2002	2003
Total	13.20	13.88	15.70	18.94	16.46	10.1 7	15.62	24.62	18.57	21.61	24.79
América	13.71	13.91	15.79	19.14	16.70	10.31	15.75	24.89	18.57	21.65	24.99
Estados Unidos	13.59	13.84	15.75	19.17	16.71	10.44	15.91	25.02	18.57	21.73	24.99
Otros	14.89	14.83	16.36	18.89	16.62	9.21	14.54	24.00	18.57	20.90	25.00
Europa	11.01	13.12	14.52	16.77	13.81	8.82	14.65	22.57	18.41	21.27	23.29
Lejano Oriente	14.77	15.40	16.48	18.91	18.39	11.41	16.44	24.78	19.51	21.46	23.74
Africa	-	-	-	-	16.37	11.74	9.82	-	18.06	-	27.19
Olmeca	16.95	16.27	17.51	21.50	19.52	13.11	17.92	28.94	23.93	24.91	29.35
América	16.95	16.27	17.51	21.50	19.52	13.11	17.92	28.94	23.93	24.91	29.35
Estados Unidos	16.93	16.26	17.49	21.54	19.56	13.10	17.91	28.92	23.92	24.92	29.31
Otros	17.94	16.51	17.74	20.93	18.91	14.06	18.81	29.27	24.01	24.76	29.64
Africa	-	-	-	-	18.85	13.02	-	-	-	-	-
Istmo	15.81	15.33	16.66	20.02	18.19	11.82	17.47	27.67	22.23	23.76	28.05
América	15.92	14.97	16.53	20.63	18.24	12.20	17.84	27.83	22.08	23.78	28.37
Estados Unidos	15.88	14.94	16.48	20.67	17.92	12.35	18.27	27.63	21.75	23.51	28.59
Otros	16.01	15.03	16.78	20.56	18.89	11.94	16.71	28.32	22.69	24.24	28.02
Europa	15.43	15.30	16.25	19.53	16.50	10.41	15.77	27.76	22.72	23.72	27.08
Lejano Oriente	15.80	15.81	16.88	19.26	18.75	12.32	19.21	26.65	22.72	23.68	27.65
Africa	-	-	-	-	17.64	11.96	9.82	-	-	-	-
Maya	11.44	12.57	14.41	17.25	14.65	8.56	14.18	22.81	17.15	20.98	24.14
América	11.94	12.48	14.42	17.37	14.87	8.60	14.15	22.89	16.96	20.95	24.28
Estados Unidos	11.91	12.48	14.41	17.40	14.92	8.70	14.23	23.01	16.95	21.06	24.32
Otros	12.50	12.36	14.62	17.08	14.23	7.88	13.72	22.23	17.01	19.80	23.92
Europa	10.24	12.90	14.36	16.54	13.44	8.32	14.43	22.25	18.15	21.16	23.24
Lejano Oriente	11.04	12.68	14.19	16.20	14.71	8.75	13.57	23.58	18.45	21.14	23.37
Africa	-	-	-	-	13.02	7.95	-	-	18.06	-	27.19

COMERCIO EXTERIOR DE PRODUCTOS PETROLÍFEROS Y GAS SECO

	1993	1994	1995	1996	1997	1998	1999	2000	2001	2002	2003	Variación 2003/2002 (%)
millones de dólares												
Exportaciones netas	-587.4	-792.4	-500.4	-913.7	-1 931.9	-1 653.4	-1 696.8	-3 432.1	-3 175.9	-2 084.5	-2 335.0	12.0
Exportaciones	831.3	616.6	673.6	703.4	682.3	557.8	947.0	1 167.7	904.1	1 186.1	1 614.5	36.1
Gas licuado	88.1	124.6	131.8	141.7	35.2	19.6	25.7	54.3	32.6	3.4	3.6	6.0
Pentanos	166.7	191.4	149.6	87.8	-	-	-	-	-	-	-	-
Gasolinas	42.1	24.4	31.7	183.7	469.4	377.3	449.9	765.3	626.3	570.6	754.3	32.2
Turbosina	129.3	111.3	134.8	92.4	36.9	16.3	15.7	45.9	26.8	63.5	90.2	42.0
Diesel	191.7	130.0	108.9	115.0	72.1	41.8	87.4	45.2	80.0	66.7	35.7	-46.5
Gasóleo de vacío	104.8	-	-	30.5	4.6	-	-	-	4.7	-	-	-
Combustóleo	100.8	4.4	52.2	0.4	0.2	4.1	4.4	0.4	16.5	160.8	141.9	-11.7
Asfaltos	-	10.3	52.2	19.6	26.9	27.0	37.4	51.7	28.7	30.3	7.5	-75.1
Otros ^a	4.2	5.3	-	0.6	-	40.9	212.3	156.0	40.7	286.9	581.3	102.6
Gas seco	3.4	14.8	12.4	31.8	37.0 ^e	30.9 ^e	114.3 ^e	48.8	47.8	4.0	-	-
Importaciones	1 418.7	1 408.9	1 174.0	1 617.1	2 614.2	2 211.2	2 643.8	4 599.8	4 080.0	3 270.6	3 949.5	20.8
Gas licuado	159.8	185.2	195.1	300.0	338.1	274.8	392.4	605.6	600.5	471.5	574.3	21.8
Propano	45.3	8.4	44.3	130.9	181.4	129.3	238.4	654.7	265.0	328.0	303.7	-7.4
Gasolinas ^b	848.7	684.8	634.1	763.0	1 292.4	1 096.2	1 002.5	1 345.5	1 930.8	1 191.8	1 033.0	-13.3
Diesel	-	-	10.6	173.6	173.6	133.8	246.3	388.4	87.6	204.8	60.7	-70.4
Combustóleo	282.7	443.7	186.6	246.5	518.7	428.7	578.7	1 132.1	715.7	155.7	198.9	27.7
Otros	4.7	4.7	4.1	0.5	2.0	26.7	53.2	107.0	56.6	143.3	252.8	76.4
Gas seco	77.5	82.2	99.1	67.1	107.9 ^e	121.7 ^e	132.2 ^e	366.5	423.8	775.4	1 526.2	96.8
miles de barriles diarios												
Exportaciones netas	-34.2	-94.6	-43.2	-93.6	-216.3	-230.3	-177.3	-282.4	-271.0	-174.5	-134.2	-23.1
Exportaciones	156.6	112.6	121.8	96.1	99.3	126.5	169.9	115.0	107.4	156.5	177.2	13.2
Gas licuado	17.8	25.3	25.1	22.7	5.4	4.2	4.5	5.5	3.1	0.4	0.3	-21.1
Pentanos	29.2	37.0	26.4	13.7	-	-	-	-	-	-	-	-
Gasolinas	6.7	4.2	5.1	23.4	67.0	79.2	71.7	69.7	73.0	70.7	70.7	0.1
Turbosina	16.8	15.8	19.1	10.3	4.4	3.0	2.3	3.6	2.5	6.3	7.6	20.2
Diesel	26.9	20.3	16.6	12.4	9.2	8.2	13.6	4.4	8.9	8.0	2.9	-63.4
Gasóleo de vacío	16.9	-	-	3.7	0.8	-	-	-	0.8	-	-	-
Combustóleo	39.8	1.7	14.4	0.1	...	1.3	0.9	0.1	3.9	24.9	21.4	-13.8
Asfaltos	-	3.4	12.1	4.5	6.1	9.8	8.8	7.4	5.7	4.4	1.2	-73.6
Otros ^a	1.8	2.0	-	-	-	14.9	47.8	20.7	5.7	41.2	73.1	77.3
Gas seco ^c	0.7	2.8	3.2	5.3	6.3 ^e	5.9 ^e	20.4 ^e	3.5	3.7	0.6	-	-
Importaciones^d	190.8	207.2	165.0	189.7	315.6	356.9	347.2	397.3	378.4	331.0	311.4	-5.9
Gas licuado	23.7	30.0	30.5	36.8	47.9	52.1	59.6	58.1	74.6	59.9	55.6	-7.2
Propano	6.4	1.3	6.8	17.0	25.6	25.0	34.2	62.6	25.2	41.7	29.8	-28.6
Gasolinas ^b	90.8	75.9	70.6	73.2	126.6	143.0	104.8	90.6	139.3	95.6	69.1	-27.8
Diesel	-	-	1.1	10.4	18.3	19.4	27.5	27.7	6.7	17.2	3.9	-77.2
Combustóleo	55.3	81.3	30.4	40.0	80.1	91.1	93.1	116.5	85.2	16.4	18.6	13.3
Otros	0.3	0.3	0.3	...	0.2	3.5	6.0	7.8	4.3	12.9	22.9	78.2
Gas seco ^e	14.2	18.4	25.5	12.3	16.9 ^e	22.6 ^e	22.0 ^e	34.1	43.1	87.3	111.6	27.8

a. En 2003 se incluye 2.2 millones de dólares y 0.2 Mbd de exportación de condensados.
 b. Incluye MTBE.
 c. Equivalente a combustóleo.
 d. No incluye el retorno de productos por concepto de maquila de crudo.
 e. Incluye la compra y reventa de gas natural en Estados Unidos.

COMERCIO EXTERIOR DE PRODUCTOS PETROQUÍMICOS

	1993	1994	1995	1996	1997	1998	1999	2000	2001	2002	2003	Variación 2003/2002 (%)
millones de dólares												
Exportaciones netas	159.5	219.4	215.2	176.1	135.3	98.1	82.5	173.7	84.3	67.0	101.3	51.2
Exportaciones	186.3	276.5	247.4	201.0	187.1	118.8	108.4	245.7	112.9	112.9	145.5	28.9
Acetaldehído	-	15.1	18.0	11.7	13.3	11.7	11.6	12.0	15.2	10.5	12.5	19.4
Acrilonitrilo	7.4	7.2	-	1.5	1.3	-	-	24.6	1.3	2.6	1.8	-32.4
Amoniaco	42.0	75.4	49.0	36.0	54.3	24.5	4.0	35.7	2.4	12.9	...	-99.8
Azufre	22.8	24.0	33.5	24.7	24.2	26.7	26.4	19.8	6.4	12.9	25.3	95.5
Benceno	18.9	18.4	9.6	11.3	-	-	0.8	-	-	-	10.1	-
Butanos/butenos	5.2	0.8	-	-	-	-	-	-	-	-	-	-
Cera polietilénica	0.1	0.1	0.2	0.3	0.2	0.2	0.1	0.1	0.2	0.1	0.2	69.0
Estireno	1.0	2.3	0.1	...	-	-	-	-	-	2.0	3.3	69.0
Etileno	23.0	53.5	54.5	46.0	36.1	23.0	35.8	95.5	46.9	28.0	39.8	42.4
Glicoles etilénicos	28.3	31.7	28.2	19.7	15.9	7.4	0.8	16.3	7.6	3.9	18.4	372.3
Polietilenos	26.3	32.5	44.7	34.2	31.4	15.8	13.8	22.7	22.7	22.4	15.4	-31.2
Polipropileno	3.4	5.9	8.0	8.4	4.0	-	...	-	-	-	-	-
Otros	7.9	9.6	1.9	7.3	6.4	9.6	15.0	19.0	10.2	17.6	18.7	6.3
Importaciones	26.9	57.1	32.2	24.9	51.8	20.7	25.9	72.0	28.6	45.9	44.3	-3.6
Acetonitrilo	0.4	0.2	0.1	0.1	-	-	-	-	-	-	-	-
Amoniaco	-	7.7	-	8.7	2.3	-	6.0	42.7	19.6	12.8	8.8	-30.9
Benceno	-	-	-	-	15.4	12.0	14.0	11.8	6.1	1.8	-	-
Polietilenos	-	-	-	-	-	1.3	1.2	1.9	-	1.2	1.8	45.0
Propileno	22.8	21.8	-	2.1	9.5	4.6	-	1.7	-	2.0	-	-
Xilenos	-	19.9	32.2	12.9	20.5	-	0.6	-	-	1.0	1.0	-6.9
Otros	3.7	7.6	-	1.2	4.1	2.8	4.1	13.8	2.9	27.0	32.7	20.9
miles de toneladas												
Exportaciones netas	1 237.3	1 381.3	1 128.7	1 033.0	897.6	938.2	702.9	798.9	652.4	634.3	714.1	12.6
Exportaciones	1 324.1	1 559.4	1 226.1	1 123.4	1 062.3	1 009.9	809.2	1 116.2	780.4	831.8	808.8	-2.8
Acetaldehído	-	48.8	60.3	40.1	41.3	36.1	38.3	36.7	36.6	28.9	32.4	12.1
Acrilonitrilo	14.5	12.5	-	2.6	2.1	-	-	31.0	2.5	3.1	2.4	-23.3
Amoniaco	389.8	557.7	303.6	217.7	321.5	198.3	37.9	248.0	20.1	123.2	0.1	-99.9
Azufre	506.2	531.4	540.0	508.9	501.0	567.7	513.2	507.2	478.3	444.7	535.0	20.3
Benceno	69.0	63.3	32.5	44.5	-	-	3.6	-	-	-	22.6	-
Butanos/butenos	35.5	6.6	-	-	-	-	-	-	-	-	-	-
Cera polietilénica	0.3	0.7	1.5	3.4	1.0	0.7	0.6	0.4	0.7	0.6	1.1	80.1
Estireno	2.1	2.5	0.1	0.1	-	-	-	-	-	4.2	6.3	50.1
Etileno	107.9	142.8	141.5	140.2	89.1	88.7	91.9	164.5	127.9	94.4	93.9	-0.6
Glicoles etilénicos	105.2	84.6	51.4	52.6	27.5	22.8	2.7	35.2	22.7	13.5	32.6	141.8
Polietilenos	64.8	74.7	75.1	63.8	49.1	32.8	25.5	35.6	45.0	51.5	26.7	-48.3
Polipropileno	7.9	12.1	13.8	16.8	8.1	-	0.2	-	-	-	-	-
Otros	20.9	21.7	6.4	32.9	21.7	62.9	95.5	57.6	46.7	67.6	55.8	-17.4
Importaciones	86.8	178.1	97.4	90.4	164.7	71.7	106.2	317.3	128.1	197.4	94.7	-52.0
Acetonitrilo	0.3	0.1	0.1	0.1	-	-	-	-	-	-	-	-
Amoniaco	-	33.3	-	38.4	10.0	-	41.8	231.7	94.1	88.6	35.2	-60.3
Benceno	-	-	-	-	47.0	44.0	45.8	27.7	19.4	4.2	-	-
Polietilenos	-	-	-	-	-	2.5	2.2	5.1	-	2.0	1.9	-3.1
Propileno	75.2	53.5	-	4.2	21.6	12.0	-	3.2	-	4.5	-	-
Xilenos	-	62.1	97.3	44.3	68.4	-	2.1	-	-	2.9	2.0	-31.2
Otros	11.3	29.0	-	3.4	17.6	13.1	14.4	49.7	14.6	95.2	55.6	-41.6